

ReportPax – Labels

Microsoft Visual Studio.Net 2005 ReportViewer Label Templates

These are the instructions for printing labels in Microsoft Visual Studio.Net 2005 ReportViewer using the ReportPax – Label templates.

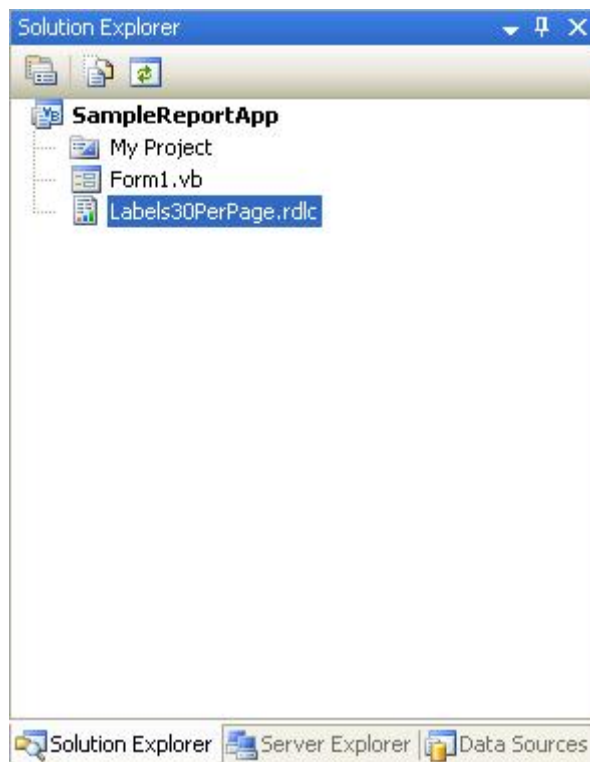
The templates were set up to make your modifications as simple as possible. The instructions do assume at least some familiarity with Visual Studio.NET and the ReportViewer Component.

If you have any questions or suggestions please email support@reportpax.com.

Set Up

- a) Unzip the files into a temporary directory.
- b) Start a new VB.Net Windows Application Project (or with .Net language of your choice).
- c) Right click the Project in the Solution Explorer and click Add Existing Items, navigate to the directory that contains the unzipped files and select the report file you wish to use. These instructions use the Labels30PerPage.rdlc file as an example.

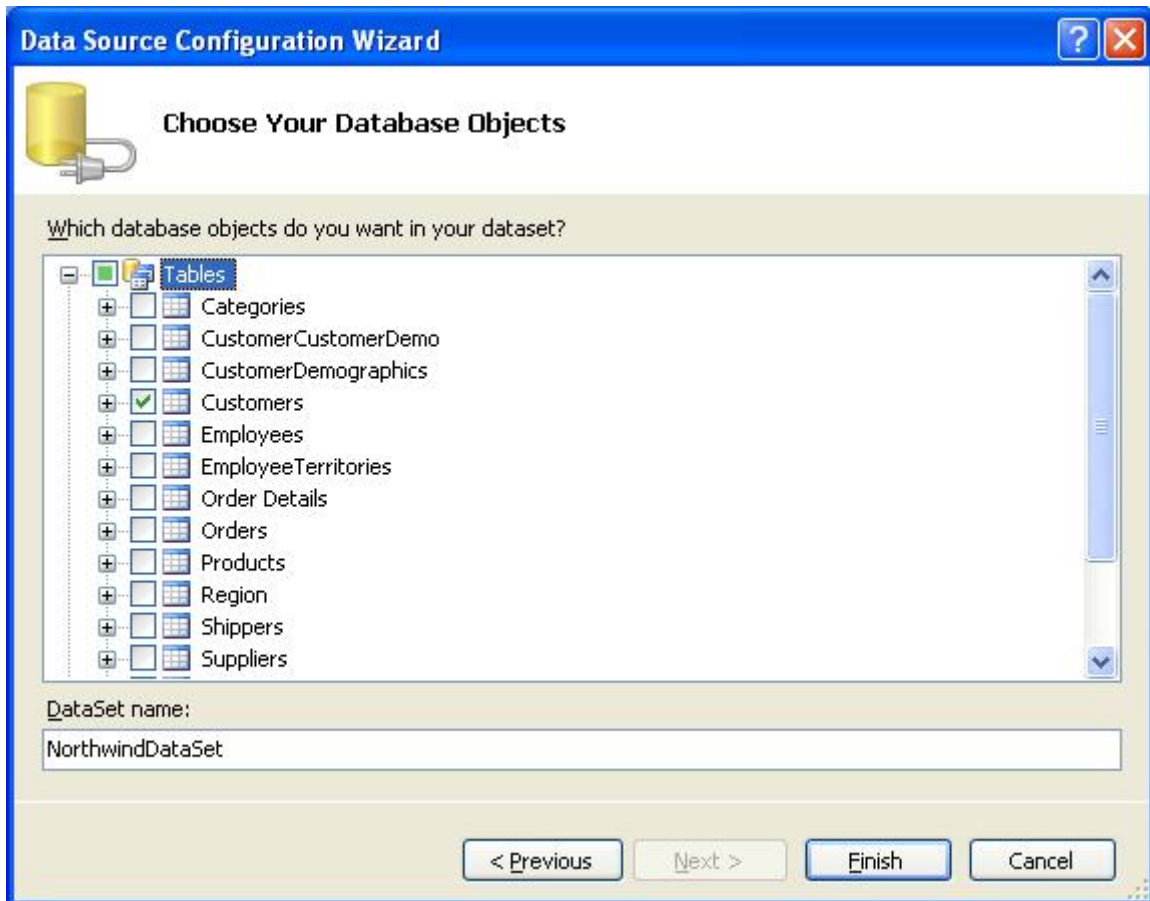
Once you have created a new project and added the report template continue on with these instructions.



Step 1

Adding a DataSet to Your Project

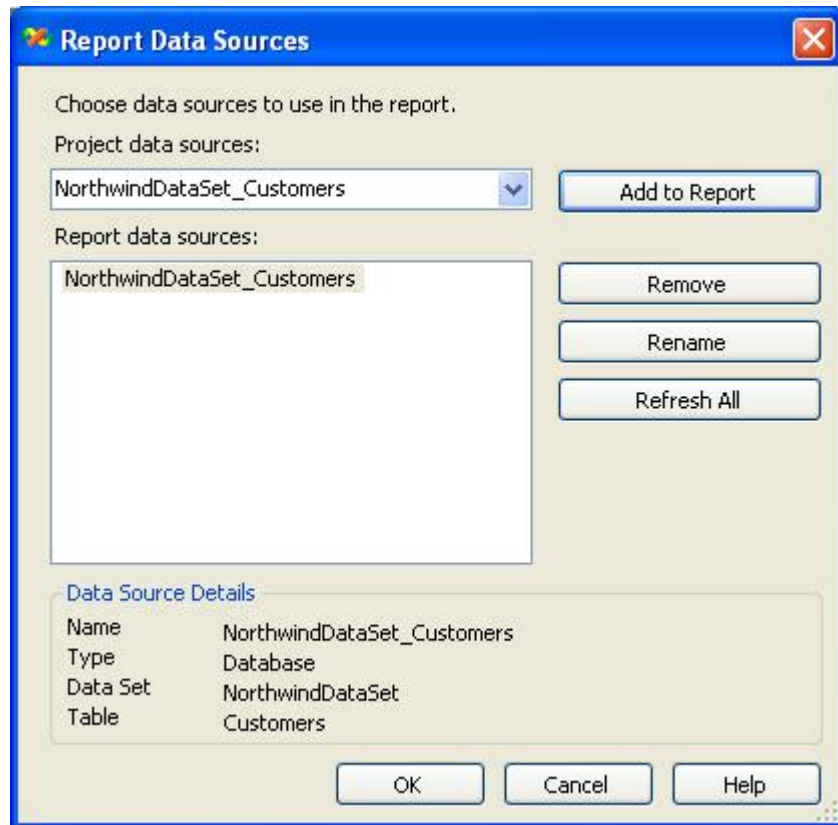
Add your DataSet by clicking on the Add New Data Source item in the Data menu. Follow the steps in the wizard to create your dataset. In this case we are selecting the Customers table in the Northwind database. Here is the final step of the wizard:



Step 2

Adding the Dataset to the Report

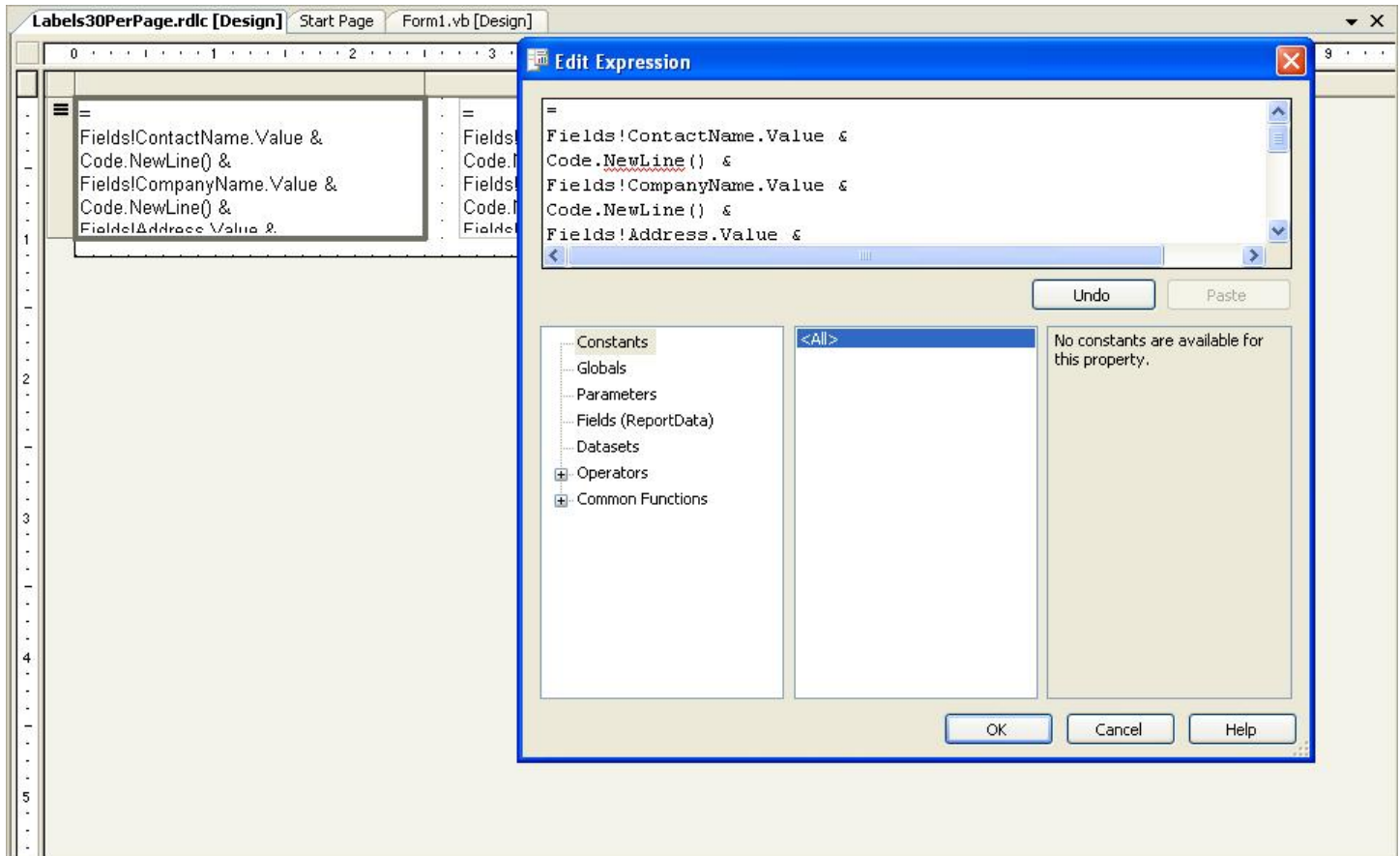
Double click the report file you added in the Setup to bring the report up in Edit mode. In the Report menu, click the Data Sources menu item and add the dataset you created in Step 1:



Step 3

Modifying the Report to Use Your Fields

You will now need to modify the report to use the data Fields of your Dataset. You will notice the report consists of three tables. One for each column needed for the labels. Right click the first table cell and select Expression to edit. In this example, all the fields have been concatenated (combined together) to form the label. You start with the name, add a new line, then company, add a new line, and so on (substituting your data Fields). Concatenating all the fields into one expression like this makes setting up the labels easier. Repeat this procedure for the other two tables (copy and paste).



Step 4

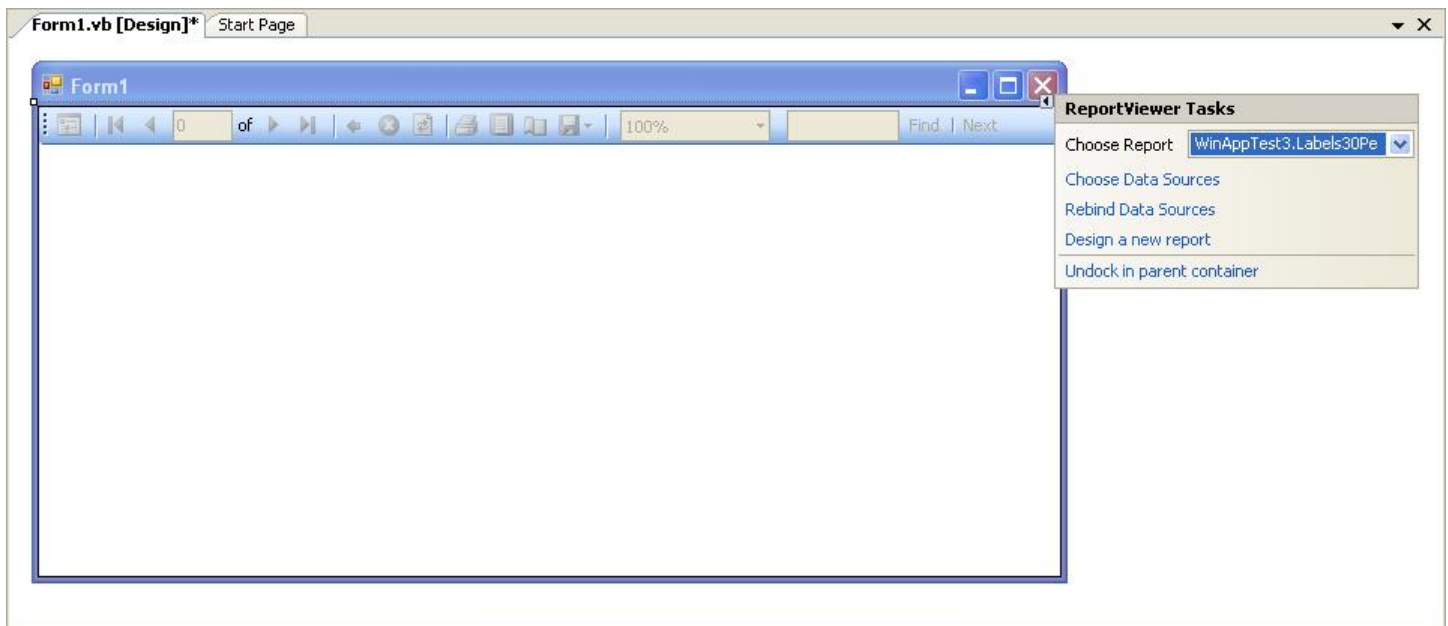
Adding the ReportViewer Component to your Form

Double click Form1 in Solution Explorer to bring up design mode. In the ToolBox window, click on Data Menu, then Drag and drop a ReportViewer component on top of Form1.

Click the Tasks icon in the upper right side of the ReportViewer component and click 'Dock in Parent Container'

Click on the Tasks icon of the ReportViewer again and select the report 'Labels30PerPage' report.

Then Click "Choose Data Sources" and select the "Data Source Instance" by navigating to your Data Source. In this case, we select the Customers object of the NorthwindDataSet.



Step 5

Preview the Report

You can now Build and Run the application.

If one of the fields you referenced in Step 3 can not be found in your dataset, the compile will fail. It is then just a matter of clicking on the error and it will bring up the code to be fixed.

Maria Anders Alfreds Futterkiste Obere Str. 57 Berlin, 12209 030-0074321	Ana Trujillo Ana Trujillo Emparedados y helados Avda. de la Constitución 2222 México D.F., 05021 (5) 555-4729	Antonio Moreno Antonio Moreno Taquería Mataderos 2312 México D.F., 05023 (5) 555-3932
Thomas Hardy Around the Horn 120 Hanover Sq. London, WA1 1DP (171) 555-7788	Christina Berglund Berglunds snabbköp Berguvsvägen 8 Luleå, S-958 22 0921-12 34 65	Hanna Moos Blauer See Delikatessen Forsterstr. 57 Mannheim, 68306 0621-08460
Frédérique Citeaux Blondesddsl père et fils 24, place Kléber Strasbourg, 67000 88.60.15.31	Martin Sommer Bóldo Comidas preparadas C/ Araquil, 67 Madrid, 28023 (91) 555 22 82	Laurence Leblhan Bon app' 12, rue des Bouchers Marseille, 13008 91.24.45.40
Elizabeth Lincoln Bottom-Dollar Markets 23 Tsawassen Blvd. Tsawassen, BC T2F 8M4 (604) 555-4729	Victoria Ashworth B's Beverages Fauntleroy Circus London, EC2 5NT (171) 555-1212	Patricio Simpson Cactus Comidas para llevar Cerrito 333 Buenos Aires, 1010 (1) 135-5555
Francisco Chang Centro comercial Moctezuma Sierras de Granada 9993 México D.F., 05022 (5) 555-3392	Yang Wang Chop-suey Chinese Hauptstr. 29 Bern, 3012 0452-076545	Pedro Afonso Comércio Mineiro Av. dos Lusíadas, 23 Sao Paulo, SP 05432-043 (11) 555-7647
Elizabeth Brown Consolidated Holdings Berkeley Gardens 12 Brewery London, WX1 6LT (171) 555-2282	Sven Ottlieb Drachenblut Delikatessen Walserweg 21 Aachen, 52066 0241-039123	Janine Labrune Du monde entier 67, rue des Cinquante Otages Nantes, 44000 40.67.88.88
Ann Devon	Roland Mendel	Aria Cruz